

WELCOME
TO OUR
BENIGN
BUSINESS
COMMUNITY

VIMI.



PRO**SEED**

32 EVENTS
2,195 GUESTS
89 PITCHES

VIMI.

PROSEED MONTHLY #33

Agenda

- ★ Intro - 10 minutes
- ★ Feature Presentation - 15 minutes
- ★ 3+1 Innovation Pitches - 20 minutes
- ★ Reciprocity Ring - 5 minutes
- ★ Beer & Pizza - 65 minutes

Agenda here ends at 20:59.

The Royal Queen Seeds Afterparty begins at 21:00.



PROSEED

We're all messy We're all struggling

"...We are all flying high in some ways & falling flat on our faces in others. Nobody has it all figured out. It's our job to cheer each other on, lift each other up, & push each other to keep giving it our best.

Who we surround ourselves with matters.

We need to be better to each other.
We're all we have..."

Amy Weatherly

VIMI.



PROSEED

Benign Business In a Safe Space

Proseed are a community of entrepreneurs eager to partner and practice altruism in a safe space with like-minded individuals.

We help* each other
any way we can.

It's the natural thing to do...❤️

(*) You can start by taking pictures of our amazing speakers, so we can share with everyone later :)

VIMI.



PROSEED



Who are Proseed?

Alex Lorent, Pillar Events

Anthony Pash, Southeast Partners

Amy Diener, Amy Diener Art

Claire Souchet, LR Paris

James Wood, The VR Guys

Jos Bosmans, BMS Recruitment

Kris Withouck, Alcami

Lawrence Chaney, GPS Legal

Noah Shepherd, Stanley Black & Decker

Takeshi Heta, Fabbitt

Mike Darnell, VIMI



PROSEED



Joining ceremony

Applicants!

Do you solemnly swear, on this rubber chicken, not to be cocks?



PROSEED



BBC is by consent

Membership in this Proseed Benign Business Community is by unanimous consent.

Anyone violating our trust & scanning this qr, other than the called new member, will be banned from our community, for life.



Please Scan this
QR code and join
the official
membership
group.





Welcome

By the power vested in me by this rubber chicken, I declare you are now a member of Proseed.

Mazal Tov!!!
#HUG



Why Join Us?

We're a community of entrepreneurs eager to partner in a safe space. We help each other any way we can. It's the natural thing to do We offer:

- ♥ Daily [learning](#)
- ♥ Weekly lunches
- ♥ Monthly [events](#)
- ♥ Community [resources](#)
- ♥ Our friendship and community



If you believe doing good for others is key to your wellbeing and success, and you're keen to practice this belief with like-minded people. Join us.



Fabbit

Spaces that help you feel focused and comfortable.

VIMI.

Creating digital success for invisible giants since 2010.

12+

Years of experience

250+

Client organizations





Worklounge is a membership which provides you access to a network of Asia's most exclusive business lounges

Your company?

Being a Proseed community sponsor is a benefit reserved to members...





VIMI.

RAMBO talks about KINDNESS-
Sustainability? Profit? CSR?
Why not do it all?

Remko Vleesch Dubois (Rambo)
CEO of Kirloskar Brothers Thailand (KBTL)



PRO**SEED**



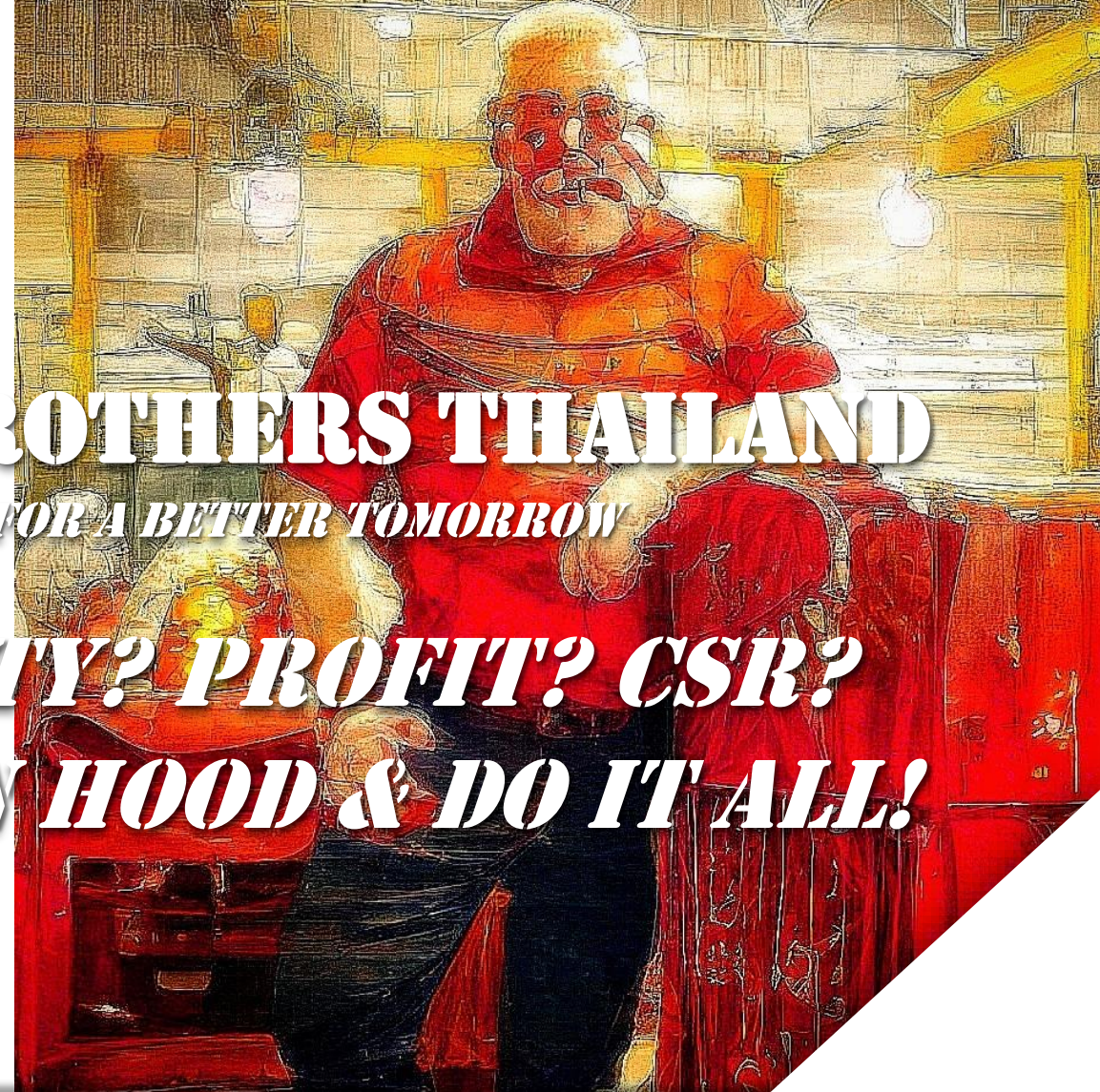
Enriching Lives

KIRLOSKAR BROTHERS THAILAND

SMART PUMPING SOLUTIONS FOR A BETTER TOMORROW

SUSTAINABILITY? PROFIT? CSR?

BE LIKE ROBIN HOOD & DO IT ALL!



Kirloskar Brothers (Thailand) Limited
Factory address: 700/711 Moo 1,
Amata City (Chonburi), Phase 8,
Phantong, Chonburi 20160, Thailand

Our Companies



UK



U.S.A



The Netherlands



India

Visit Us

www.kirloskarthailand.com



“RAMBO” Vleesch Dubois

Born in 1967 in Gouda
The Netherlands

Kirloskar Brothers Thailand

CEO





Enriching Lives

Kirloskar Brothers (Thailand) Limited

Established in 2009

KBTL is the BOI promoted head quarter and assembly plant for the KBL Group of companies for the East Asia region.

KBTL supplies fluid solutions and the delivery program includes listed fire pump sets, end suction, split case, multistage, side channel, vertical turbine, mag drive, solar powered and concrete volute pumps.

Main business

With world famous group brands like KBL, KEPL and SPP Pumps we are market leader in fire protection, water, energy, process and industrial pump solutions.



Our Capabilities

KBTL Manufacturing excellence, service, testing, stock and engineering capabilities in Thailand enable us to supply high efficiency & quality products and services to our customers in the region

IOT & AI

Provide a better solution Alarms & Warnings, Predictive Maintenance/ Spares Management, Remote Monitoring, Historical Data Trending, Application Performance

Our Business



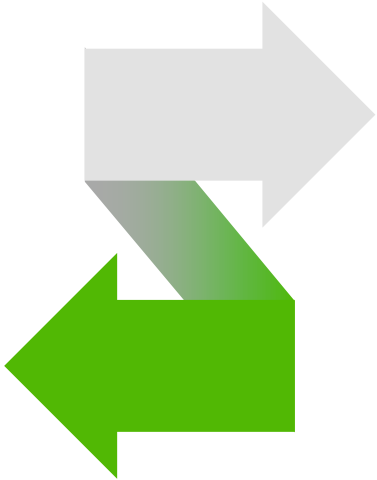
Enriching Lives

*Large & Medium Flow
pumping solutions*
for complex fluid management
system

Small pumps
for day-to-day use at households
and farms.

Valves
for industrial and large-scale
applications

*Hydel /PAT/PICO
turbines*



Oil & Gas



Power



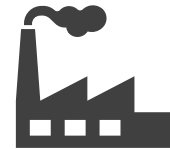
Marine & Defence



Irrigation & Agriculture



Building & Construction



Industrial



Water Resource Management



Customer Service & Spares





Enriching Lives

Kirloskar Brothers Thailand Capabilities

- BOI Promoted facility
- Total floor area : 9,600 m²
- Assembly shop with crane capacity up to 15.000 kg
- Hydrostatic testing up to 120 bar
- Repair and Service Area
- Meeting and Training rooms
- Pump sets and UL / NFPA 20 Fire Pump Systems
- Spare part warehouse / on-stock pump program
- Certified welding, fabrication, machining
- Paint Booth and coatings
- Engineering & Design
- Testing pump sets in our test lab up to 500 m³/h – 250 kW



Our Clients



Enriching Lives



And many more...



Enriching Lives

Khlong Bang Sue Drainage Pumping Station (Bang Sue) Thailand





Enriching Lives

Key Facts about KBL – Group Turnover USD 2.5 Billion

We are a leader in fluid handling solutions and a major global manufacturer of centrifugal pumps



Giving Employment to
6,000+ people

Manufacturing across
16 plants

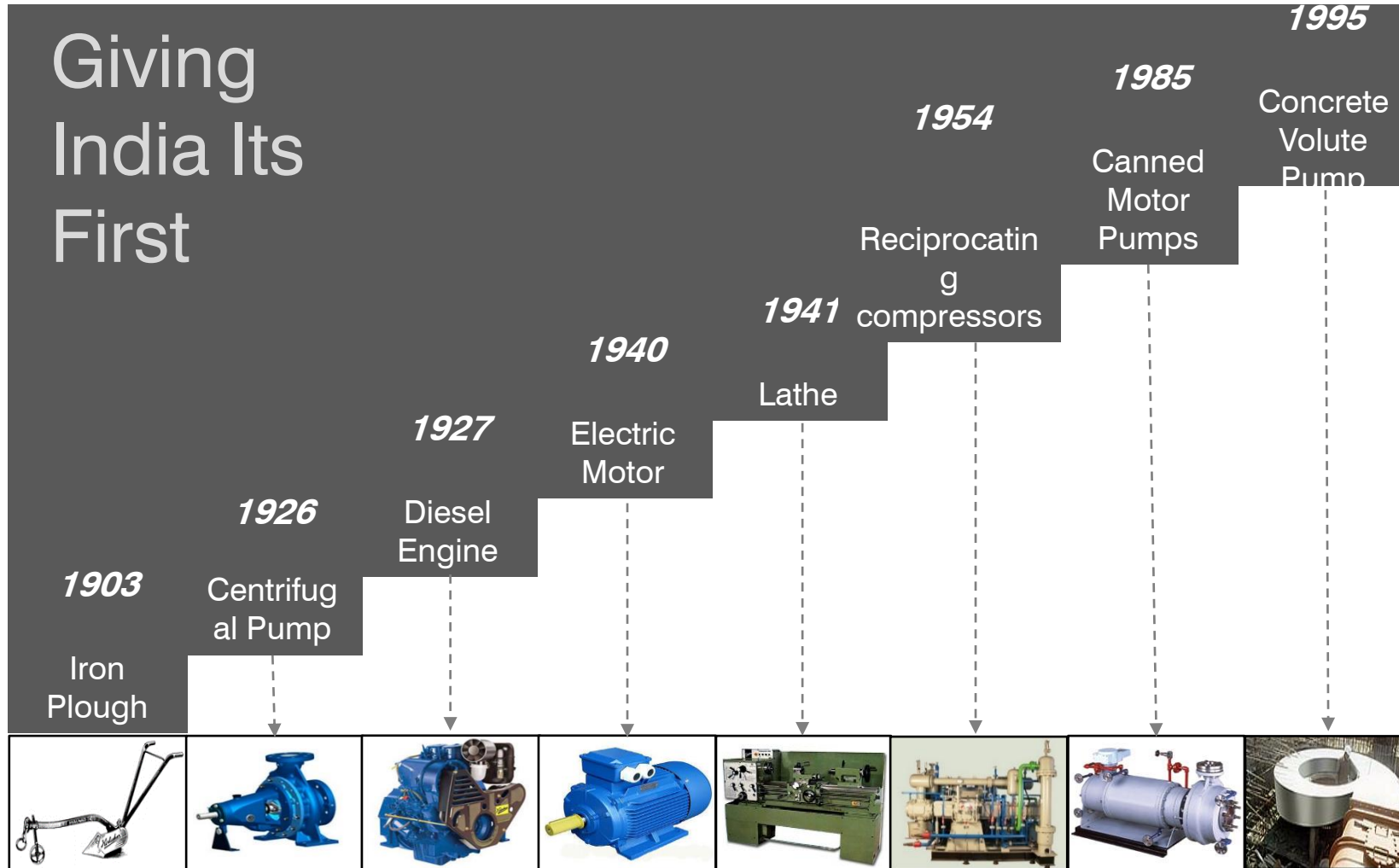
Serving world for
125+ years
HQ Pune India

9th pump manufacturing company
to get N and NPT certification from
American Society of Mechanical
Engineers

Contributing to Indian society through the **KBL Way**



Enriching Lives



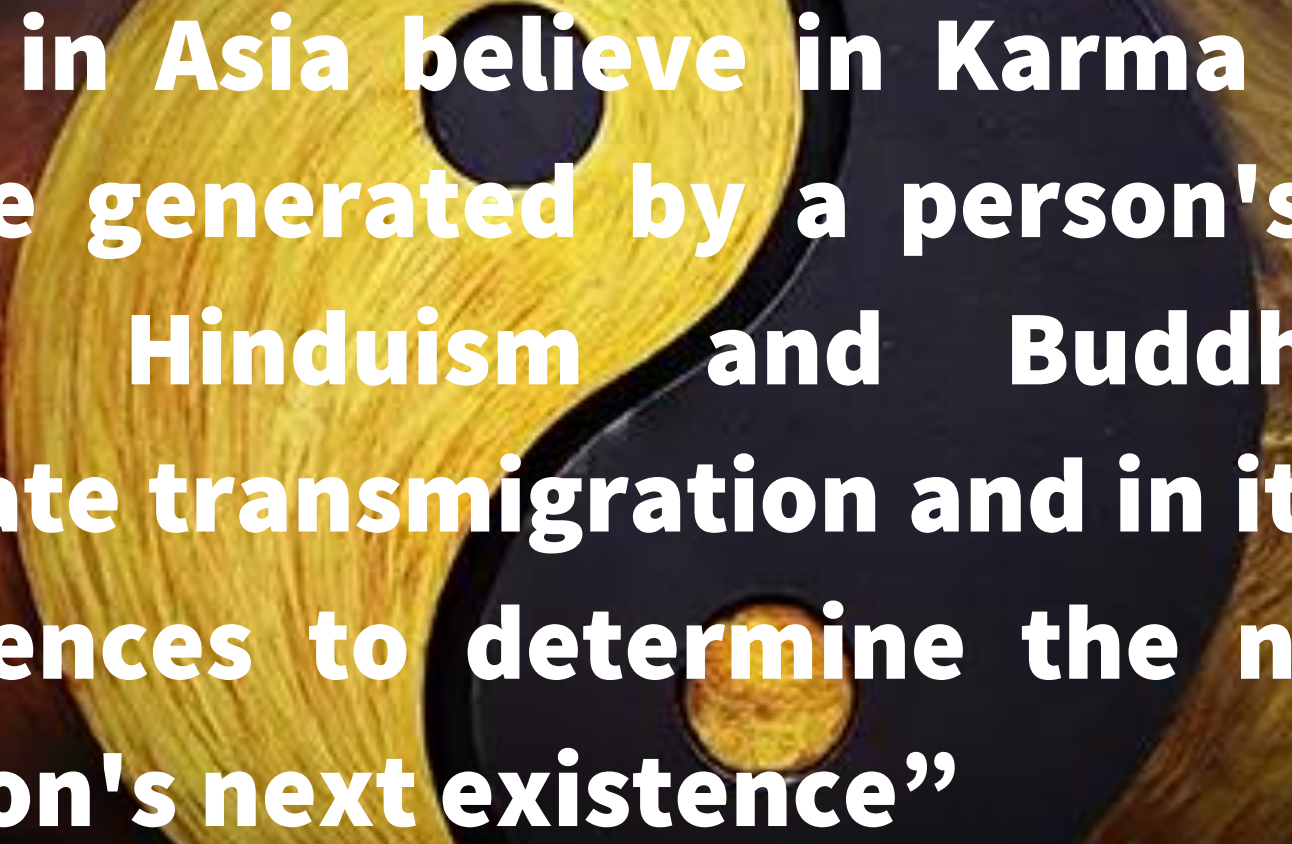


Enriching Lives

Kirloskar Brothers since 1888



“When Kirloskar started his business in 1888 he wondered Is life about problem Solving and making big profits or is there more inspiring life possible the one of innovation and sharing for a greater good and a bigger self fulfillment?”



“People in Asia believe in Karma Which is the force generated by a person's actions held in Hinduism and Buddhism to perpetuate transmigration and in its ethical consequences to determine the nature of the person's next existence”

For companies Karma is the concept of an “action” or “deed” which fuels the entire cycle of cause and effect.

As a leader, you and your corporation help communities. Acting and responding in an ethical and moral manner is building up a positive corporate Karma – either knowingly or unknowingly – because it is displaying a positive corporate culture; employees are empowered, and the surrounding community feels valued, rather than feeling as though they are being taken advantage of (e.g. resources, tax breaks etc.). **It is depositing positive Karma into a bank account if you will.**

Success Stories



Enriching Lives

To create good Karma you apply the money on your bank account to apply it to society so you get more profits to a good cause to create the circle of good and profits for a better tomorrow

Some Examples...



Tham Luang Cave Rescue



This is a moment of great joy. The rescue mission to bring out the boys of the Wild Boars football team and their coach from the flooded Tham Luang caves was a complete success, accomplished on 10 July 2018.

How this episode came about was something beyond control and we were all caught by surprise. Search and rescue had to be put together on the spot, right there and then. It's now clear that everyone of us rose to the challenge, in dealing and adapting to the changing demands of the situation. All parts of society pulled together – government, private sector and the general public alike, mustering whatever resources at their disposal, be they physical labour, ideas, donations, and, even, in one case, the ultimate sacrifice of life itself. The group in danger themselves were taking good care of their fellow sufferers in the most admirable manner. The outpouring of sympathy and concern from all corners of the world in support of both the group and their rescuers, were overwhelming. The rescue mission, however hard and arduous it proved, has indeed given rise to something of great beauty whose value is truly beyond measure.

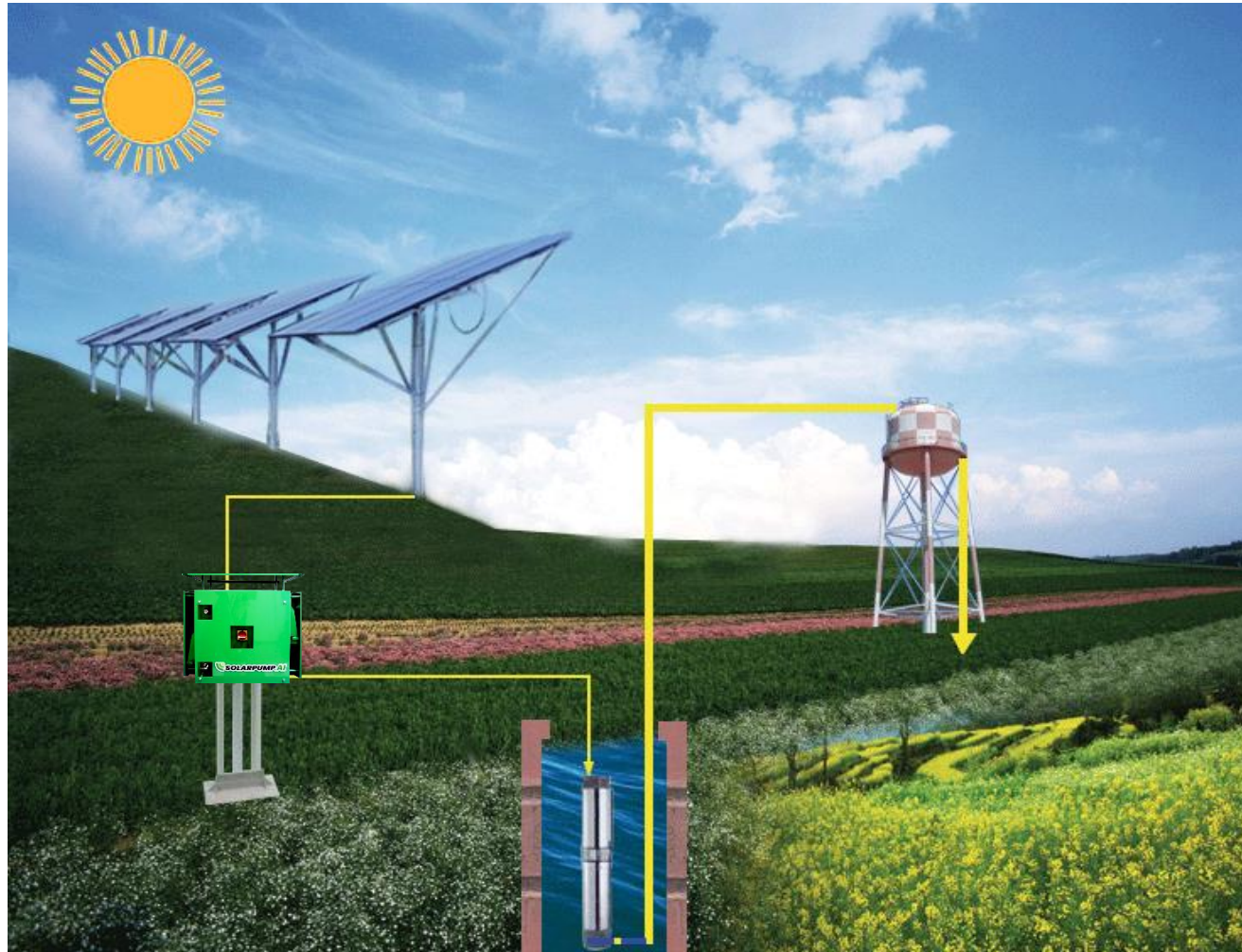
I owe my deepest thanks to every single individual and every single body having a part in this mission. Clearly, there are important lessons to be drawn from this experience. The application of good management, knowledge, and technical expertise in a manner suited to the demands of the situation, are essential keys to success in overcoming obstacles and finding solution, not only in this context but equally, in the great task of national development itself. These essential keys should of course be accompanied by personal qualities of caution, self-discipline, control, and the ability to give one's utmost in working with others. The basic human virtue of helping one another in a spirit of generosity and love, is in itself a power of formidable strength which can make humankind go on living together in an everlasting peace.

Vajiralongkorn
12 July, 2018

Gifted Smart Farming Solutions



Enriching Lives





ALL-WOMAN KBL PLANT

Schools – Hospitals



Vikas Charitable Trust's
KIRLOSKAR SCHOOLS
(English Medium)



Enriching Lives



- ▶ TO PROMOTE AND ENCOURAGE PRIMARY, SECONDARY AND HIGHER EDUCATION.
- ▶ TO PROMOTE SPORTS, GAMES AND OTHER WELFARE WORKS.
- ▶ TO PROMOTE ENVIRONMENT PROTECTION PROGRAMS.
- ▶ TO PROVIDE AWARENESS IN HEALTH AND EDUCATION BY RUNNING PERIODIC CAMPS IN RURAL AREAS.
- ▶ TO PROVIDE FINANCIAL & INFRA STRUCTURE ASSISTANCE TO EDUCATIONAL INSTITUTIONS.
- ▶ TO RENDER FINANCIAL ASSISTANCE FOR THE RELIEF OF PERSONS AFFECTED BY NATURAL AND OTHER CALAMITIES.
- ▶ TO PROVIDE HELP IN SETTING UP OR RUNNING HOSPITALS.



Enriching Lives

START BEING A MODERN ROBIN HOOD

KIRLOSKAR BROTHERS (THAILAND) LIMITED

A Kirloskar Group Company

Office: 50 Sukhumvit 21 Road, GMM Grammy Place Office Building, 18th floor, Unit 1805, Khlongtoey-nua, Wattana, Bangkok 10110S

Factory: Amata Nakorn Industrial Estate (Phase 8), 700/711 Moo 1, Phan Thong, Phan Thong, Chonburi 20160

Email: ask@kirloskar.co.th



VIMI.

Open Mic Elevator Pitches

3 Minutes Pitch
2 Minutes Q&A



PROSEED





Ethical & Sustainable Artisanal Process



Inspired by heritage



- Strong unique luxury product with a story and a soul
- No competition/ Organic growth/ Real fans
- Endless potential/ forever piece



Authentic branding
& marketing built on
real relationships &
creativity/ not fake
tactics



SIN-DRESS

- Wearable ART for the contemporary Goddess
- Fits most body shapes & sizes; easy care & wear
- Effortlessly elegant, comfortable, versatile forever piece
- Totally unique, sustainable et ethically handcrafted
- Already clients in 3 continents/ 8 countries++
- Clients from 20-80 years old

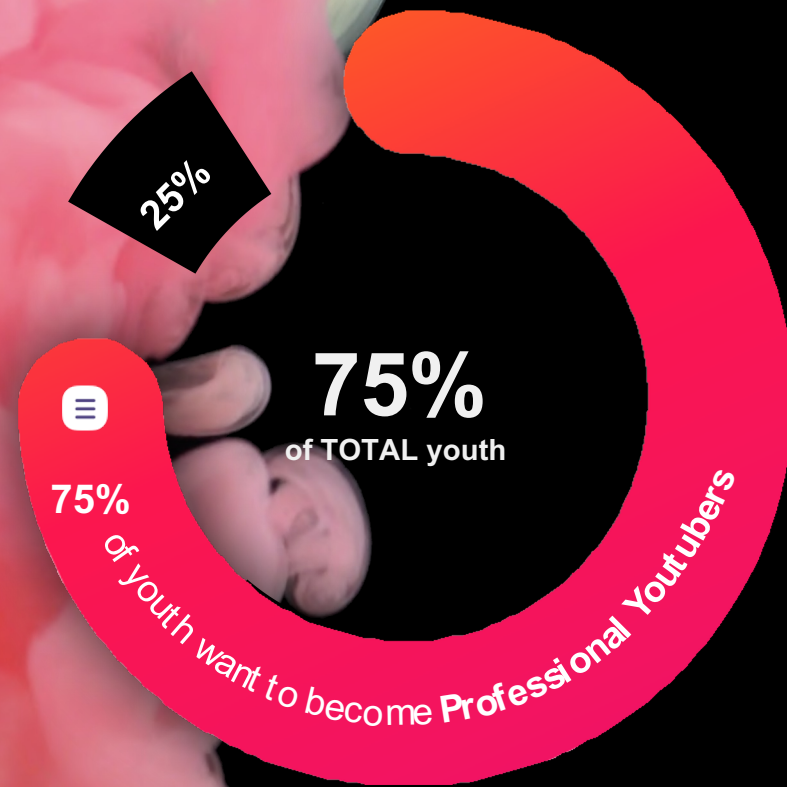


Pitch
Evaluation



FANDO NETWORK

Fando Network is a platform for creators and their communities to build their own independent digital economies.



Market Need & Solution



Hard to engage

Fans cannot participate in content creation and investment



Hard to integrate

Creators cannot integrate the community well, and need to optimize for max revenue



Hard to sustain

Shorter life cycles, higher cost of creation, and faster competition

A Network to connect and align fans, creators, brands, publishers, clubs and investors: **FANDO NETWORK**



Coordinated ownership and contribution fostering loyalty and trust.



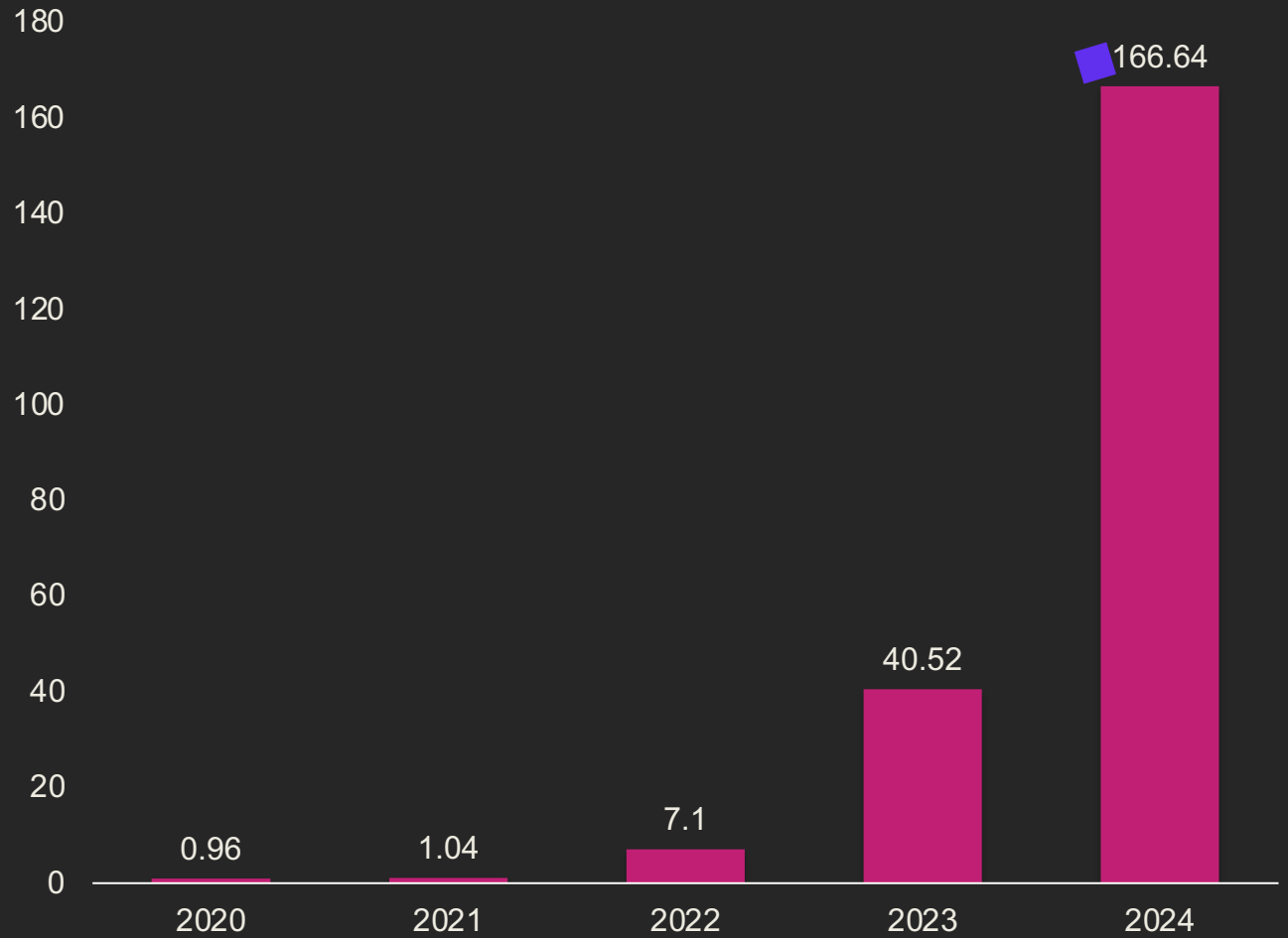
Gamified participation through NFTs leading to long-term engagement.



Flexible instruments to get early market proof and community buy-in, reduce investment risk.

Business Model & Revenues (mn)

- NFT ASSET DROP
- TRANSACTION FEE
- SUBSCRIPTIONS
- ADVERTISING FEE
- SPONSORSHIP FEE
- LICENSING FEE
- DATA REVENUE
- PAY PER VIEW REVENUE



Traction



2.33 MN
REGISTERED USERS



1.32 MN
MAU



498 K
DAU



14:11 MINUTES
AVG. TIME SPENT



127.33 MN
MONTHLY VIDEO
VIEWS



884 K
MONTHLY CONTENT
CREATED



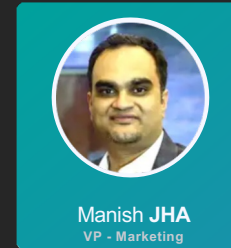
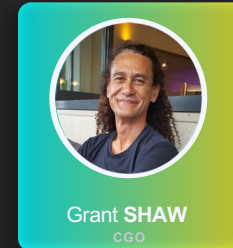
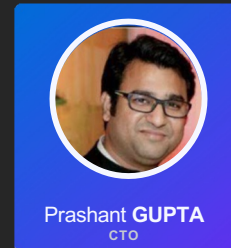
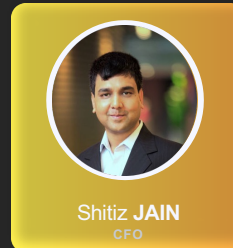
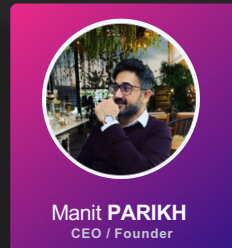
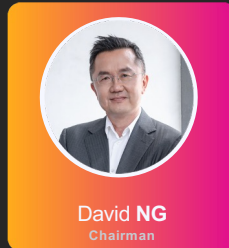
2.5 K
INFLUENCERS &
BUSINESS ONBOARDED



75 +
CLUBS AND ASSOCIATIONS
ONBOARDED

FANDO NETWORK

Fando Team:



Invested by:



Google
Ventures



Hustle
Fund

PLUGANDPLAY

Plug and Play
Ventures



Dutch Sports
Tech Fund



Miti
Ventures



Mana
Partners

Raising:

USD 3MN

- Signed: USD 2MN
- Raising: USD 1MN
- Instrument: SAFE Notes
- Terms: USD 30MN Valuation Cap

Use of Proceeds

- Technology growth: 50%
- Infrastructure & Security: 30%
- Marketing & Expansion: 25%
- HR: 5%

Adoption is coming

Pitch
Evaluation



Own A U.S.A Airbnb Rental



+



=



LAKEWOODS MOUNTAIN CHALET

Investment Presentation - Southern Oregon USA

August 25th, 2022

Why Invest in U.S. Real Estate?

Real Estate
Appreciation



Domestic
Travel



Passive
Income



1st Phase (Acquire The Last Piece of Land On The Market):

Zillow Save Share More

\$66,000 1 Acres

41734 Timber Cir, Klamath Falls, OR 97601

● Active

Contact Agent

Overview Facts and features Price and tax history More

- Unimproved land
- No data
- No data
- No data
- \$710 annually HOA fee
- Likely to sell faster than 82% nearby.



LAKEWOODS MAP LEGEND:

- Block 1: Lots 101-145
- Block 2: Lots 201-224
- Block 3: Lots 301-322
- Block 4: Lots 401-410
- Block 5: Lots 501-514

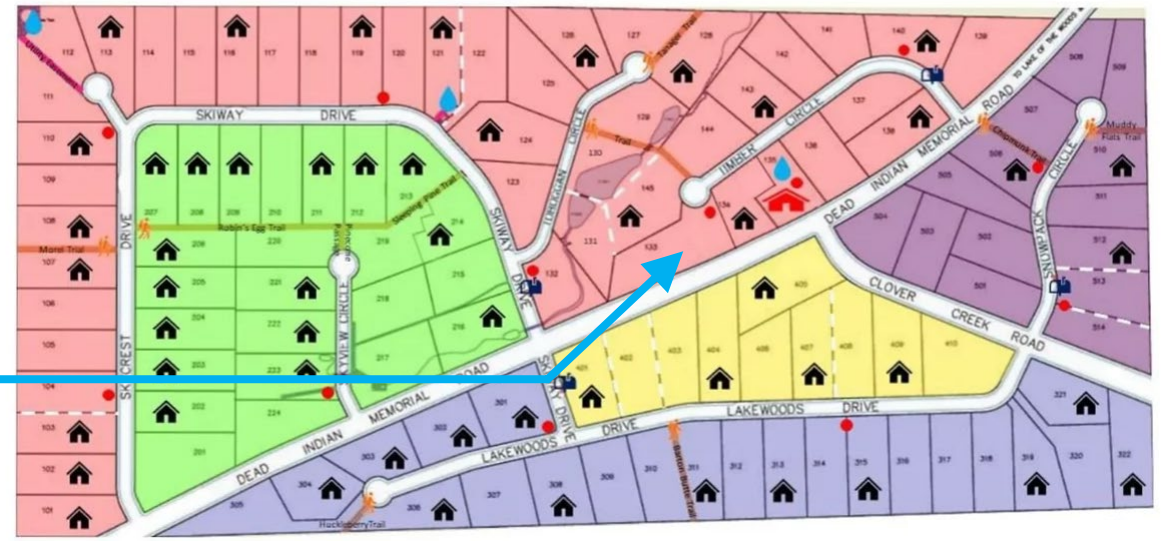
- RESIDENCE
- MAILBOX LOCATION
- FIRE HYDRANT LOCATION
- COMMUNITY RECREATIONAL TRAIL
- FIRE STATION (LOT 135 - DEAD INDIAN/CLOVER CREEK)

- Dotted line indicates officially combined lots
- Utility only easement

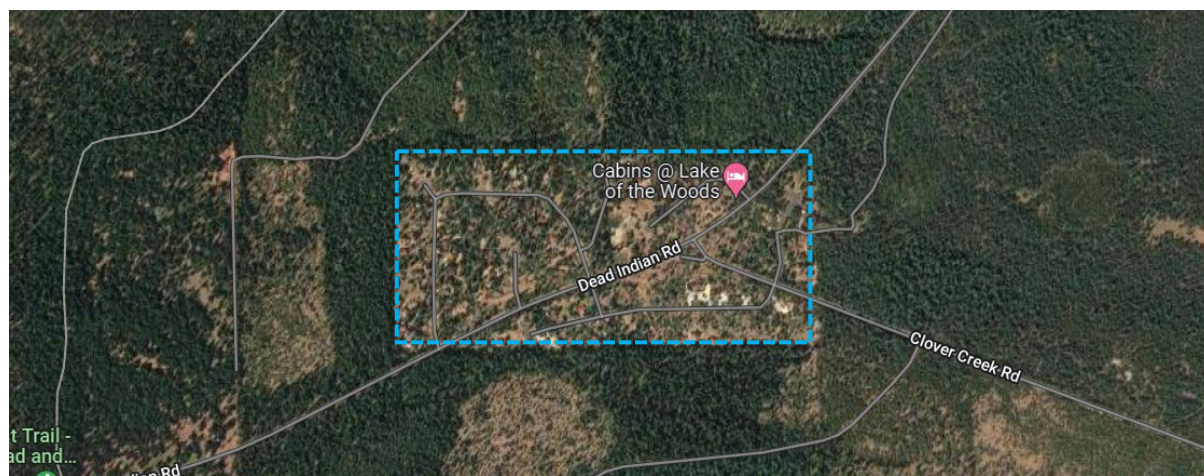
WATER SYSTEM LOCATIONS:

- Lot 112 - above ground water storage tank
- Lot 121 - below ground water storage tank
- Lot 135 - well/pumphouse

***County records include block numbers. Lot 101 is Block 1, Lot 1 on their records.*



Total of 112 Lots in Sub-Division



What is the Ask?

\$550,000 *Estimated Pay Back Period 6.3 years

Phase 1

Purchase the Land:

\$66,000

This the last piece of bear land on the market. It's over an acre with utilities stubbed at the site and septic in the ground.

Phase 2

Build the Structure:

\$484,000

Utilities/Permits/Arch/Construction
- Acquire Capital for Construction (\$200 per square foot, i.e. 2,000sf = \$400,000 construction budget)

Phase 3

Launch Branded Airbnb:

\$400 per night

- Rent it as an AirBnb, Generate more capital and acquire more land and replicate the process. (Other homes in the Area are generating 8 – 10k per month in revenue from AirBnB.)



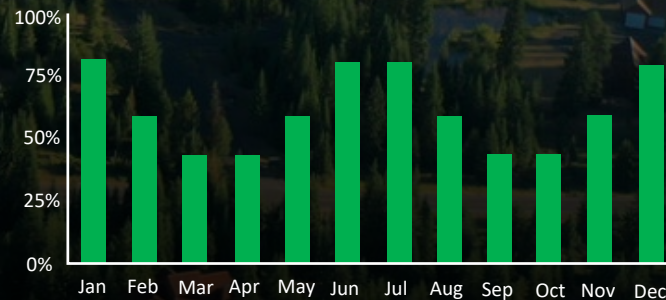
Immediate Equity
\$100,000



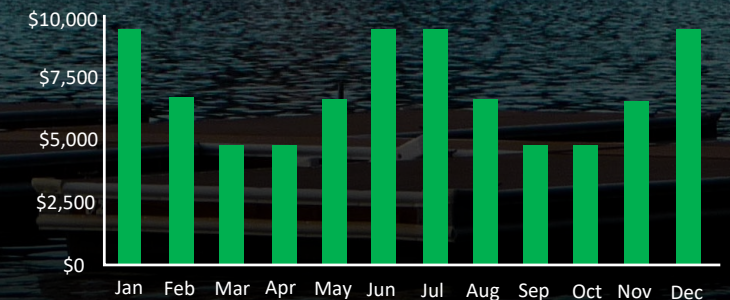
18 month Design/Construction



Average Occupancy
60%



Average Monthly Revenue
\$7,200



Annual Projected Revenue = \$86,400



[HOME](#)

[ABOUT](#)

[EXPERIENCE](#)

[REAL ESTATE](#)

[RENT A CABIN](#)

[GALLERY](#)

[OWNERS SITE](#)

[Shop](#)

LAKEWOODS VILLAGE

ALL THE INFO YOU NEED TO KNOW ABOUT THIS
INCREDIBLE COMMUNITY

Thank You
STRUCTURE **V**ISION

Pitch
Evaluation





VIMI.

Community Pitch

Hands Across the Water
Victor Rollins



PROSEED





PAMA HOUSE









VIMI.

Reciprocity Ring

Ask for the help you need
Offer the help you can give



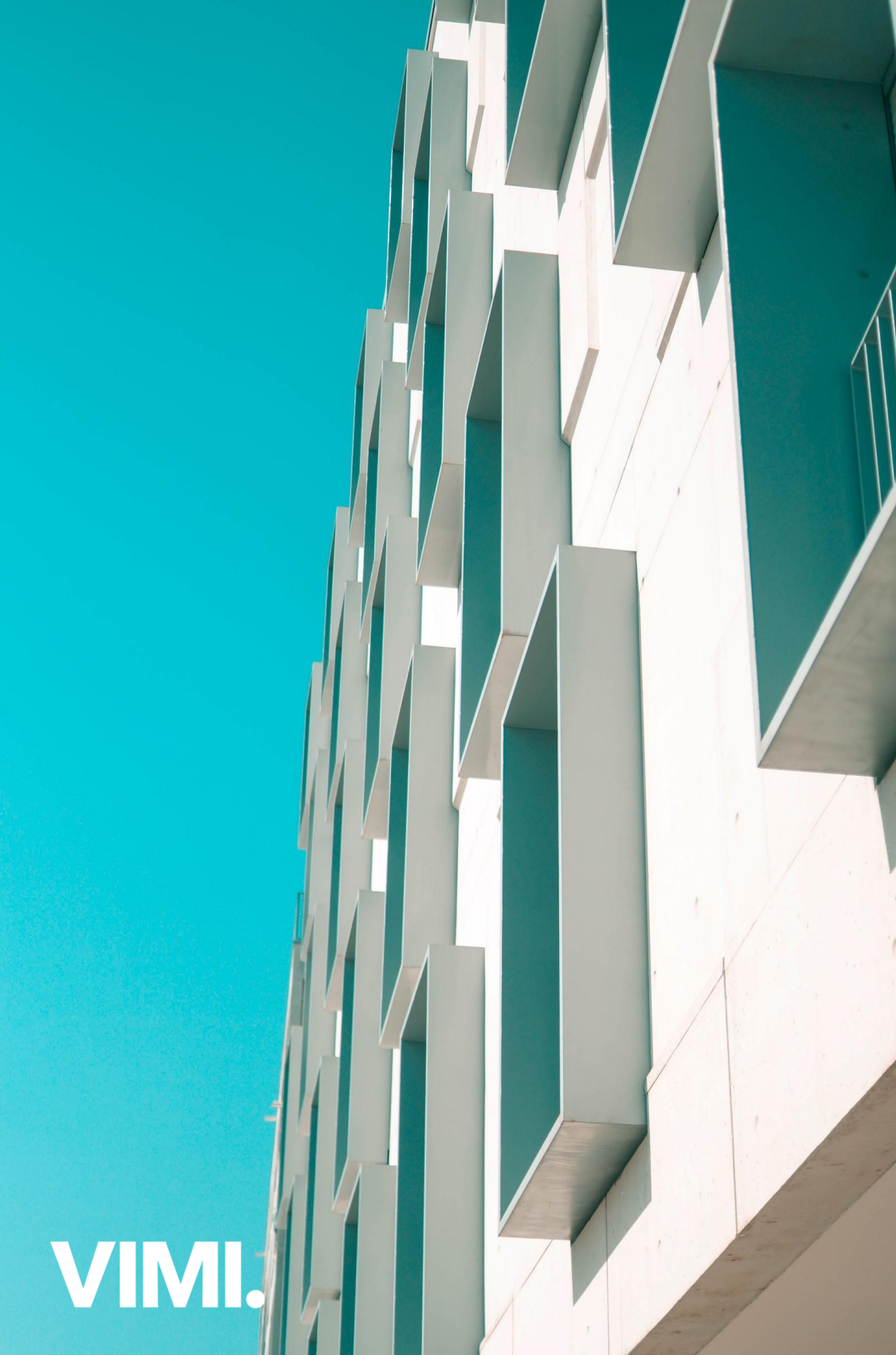
PROSEED



Beer is free but we recommend ₱100 donation to our featured charity



PROSEED



VIMI.

Stay in Touch



Proseed Friends
on Whatsapp



LINKEDIN



FACEBOOK



PROSEED